

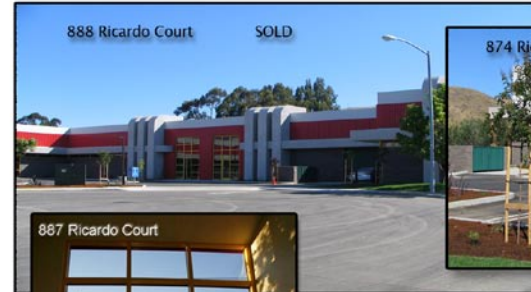
Table Of Contents

Site Plans

- 814 Ricardo2
- 830 Ricardo.....3
- 846 Ricardo.....4
- 856 & 874 Ricardo5
- 882 Ricardo.....6
- 888 Ricardo7
- 887 Ricardo.....8

Elevation Plans

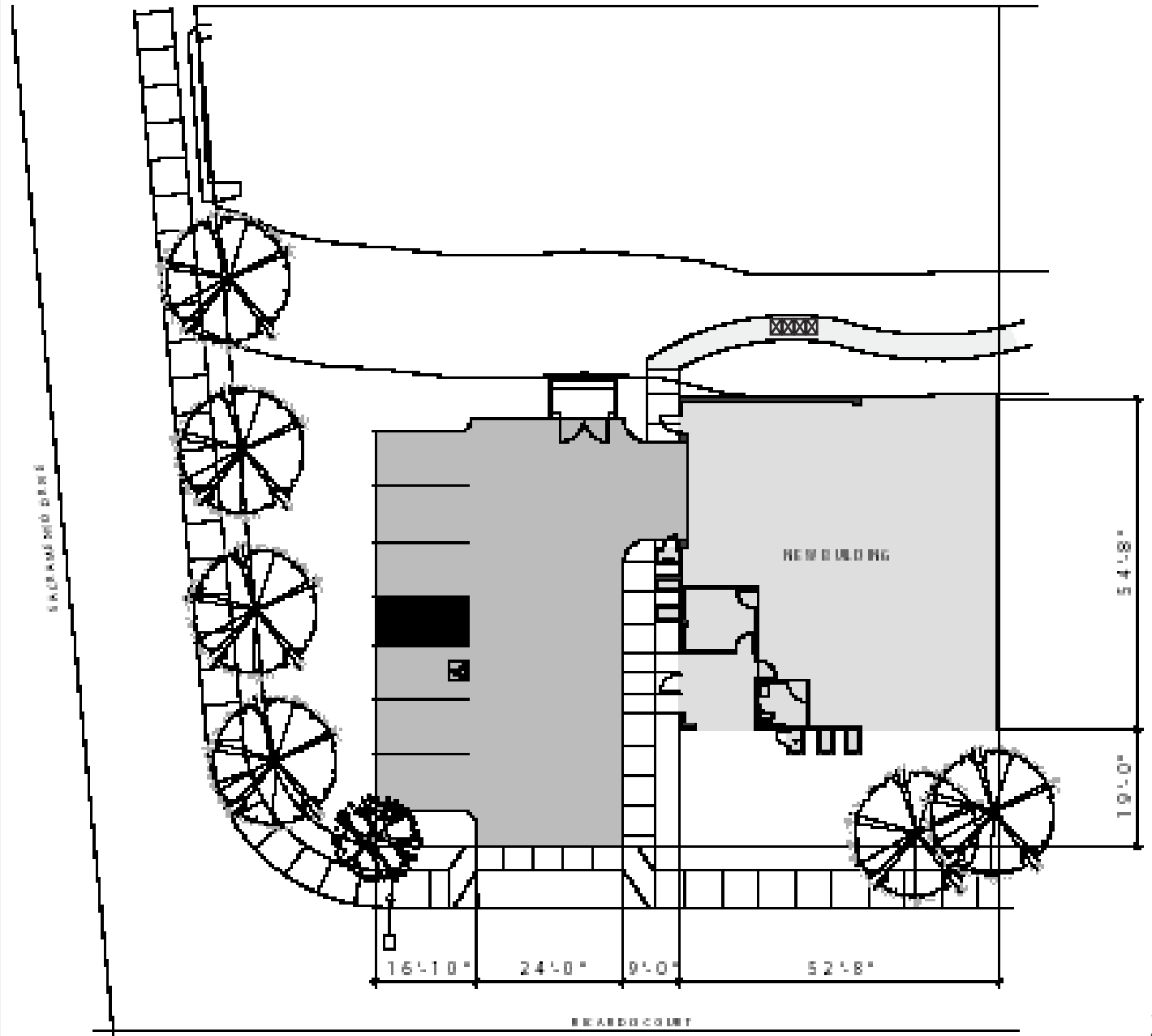
- 814 & 830 Ricardo9
- 846 & 856 Ricardo 10
- 874, 882 & 888 Ricardo 11
- 887 Ricardo..... 12



Ricardo Court Complex
814 Ricardo Court
San Luis Obispo, California

Site Information

Site Area: 17,175/sf
Building Area: 2,900/sf
Ceiling Height: 18' feet +/-
Parking: 6 spaces

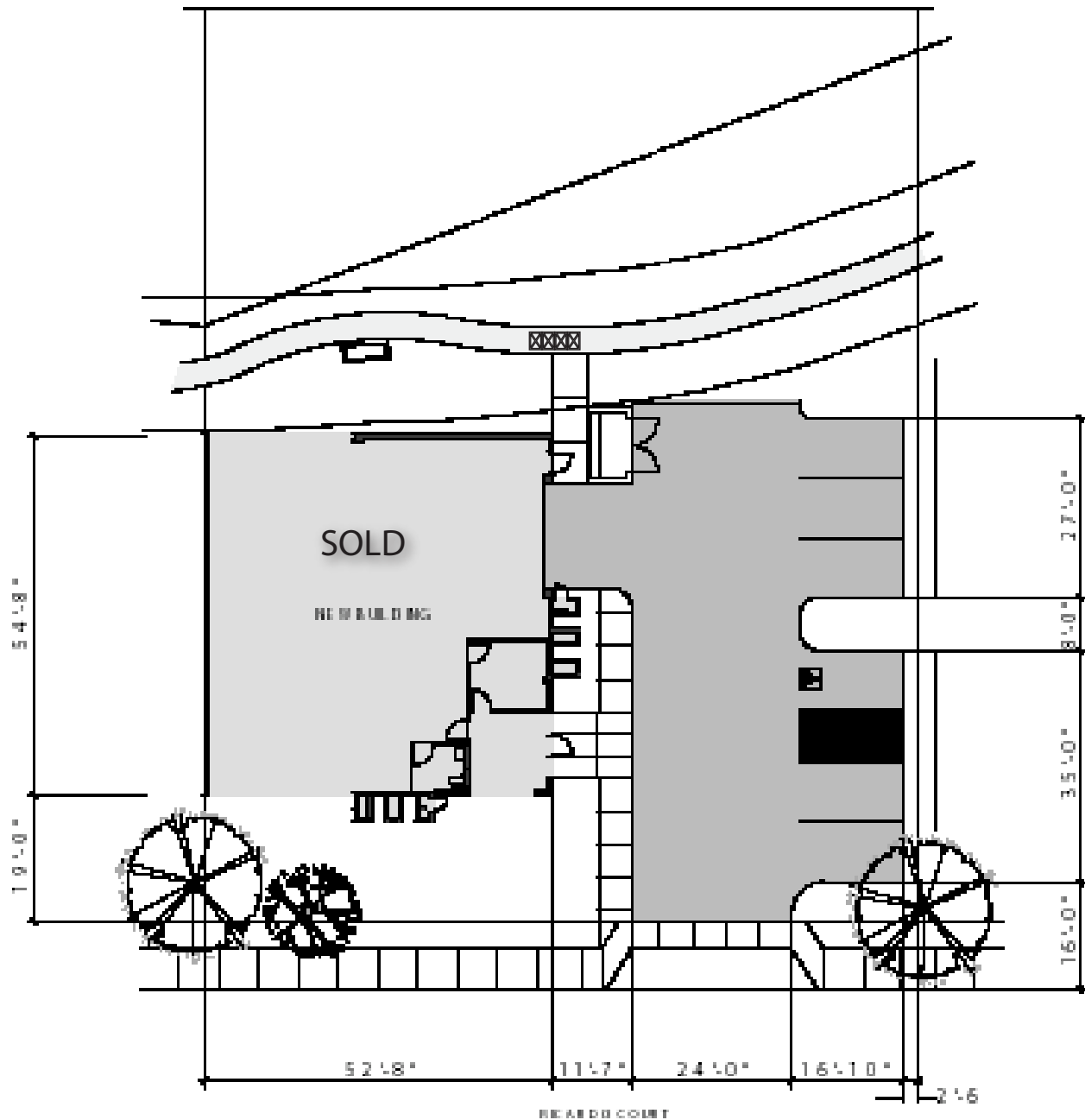


Quaglino Properties, LLC
815 Fiero Lane,
San Luis Obispo, CA 93401
Phone: 805.543.0560
Fax: 805.543.0214
Email: sue@quaglino.com
Website: www.quaglino.com

Ricardo Court Complex
830 Ricardo Court
San Luis Obispo, California

Site Information

Site Area: 17,175/sf
Building Area: 2,900/sf
Ceiling Height: 18' feet +/-
Parking: 6 spaces

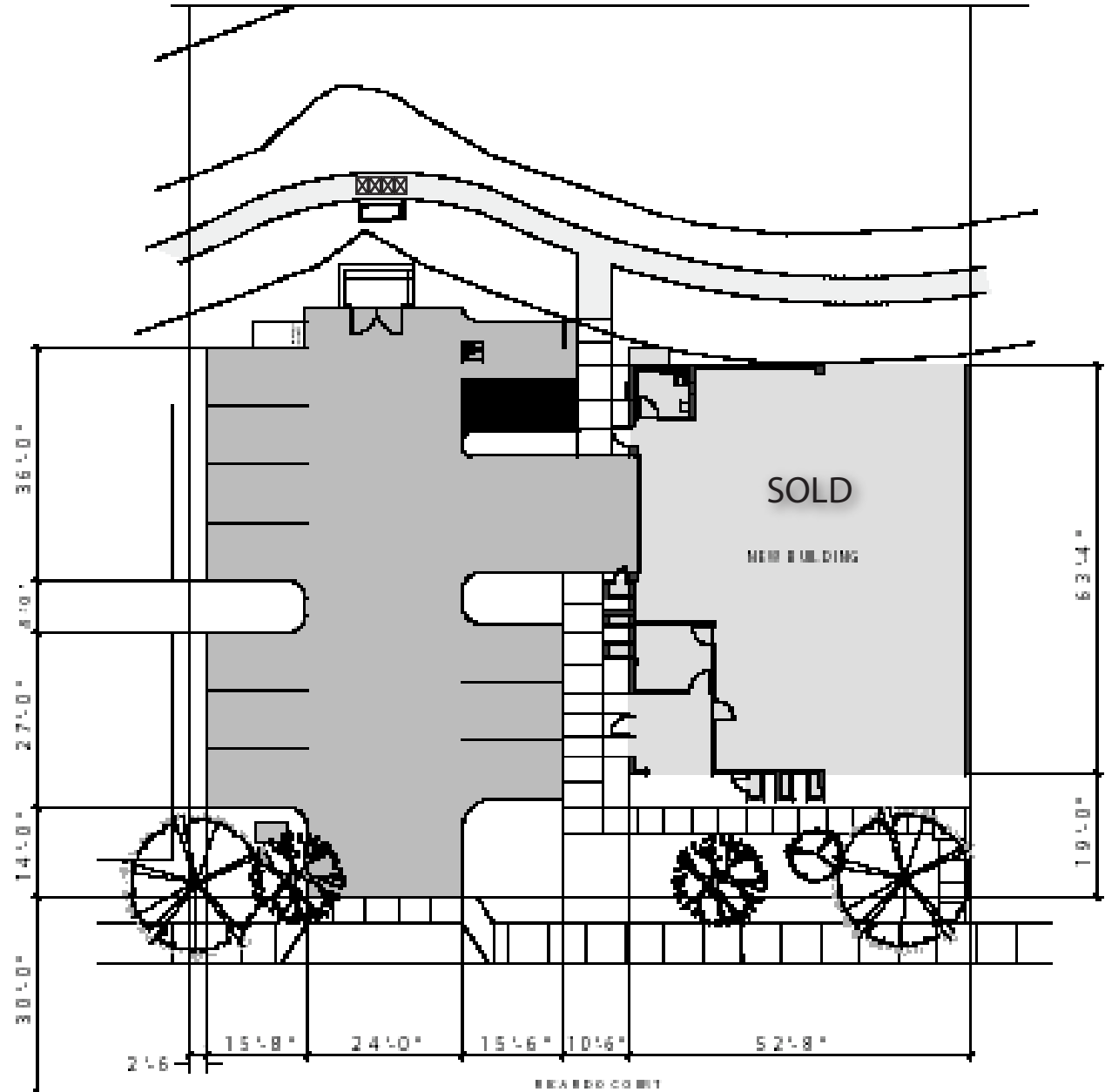


Quaglino Properties, LLC
815 Fiero Lane,
San Luis Obispo, CA 93401
Phone: 805.543.0560
Fax: 805.543.0214
Email: sue@quaglino.com
Website: www.quaglino.com

Ricardo Court Complex
846 Ricardo Court
San Luis Obispo, California

Site Information

Site Area: 11,033/sf
Building Area: 3,335/sf
Ceiling Height: 18' feet +/-
Parking: 12 spaces

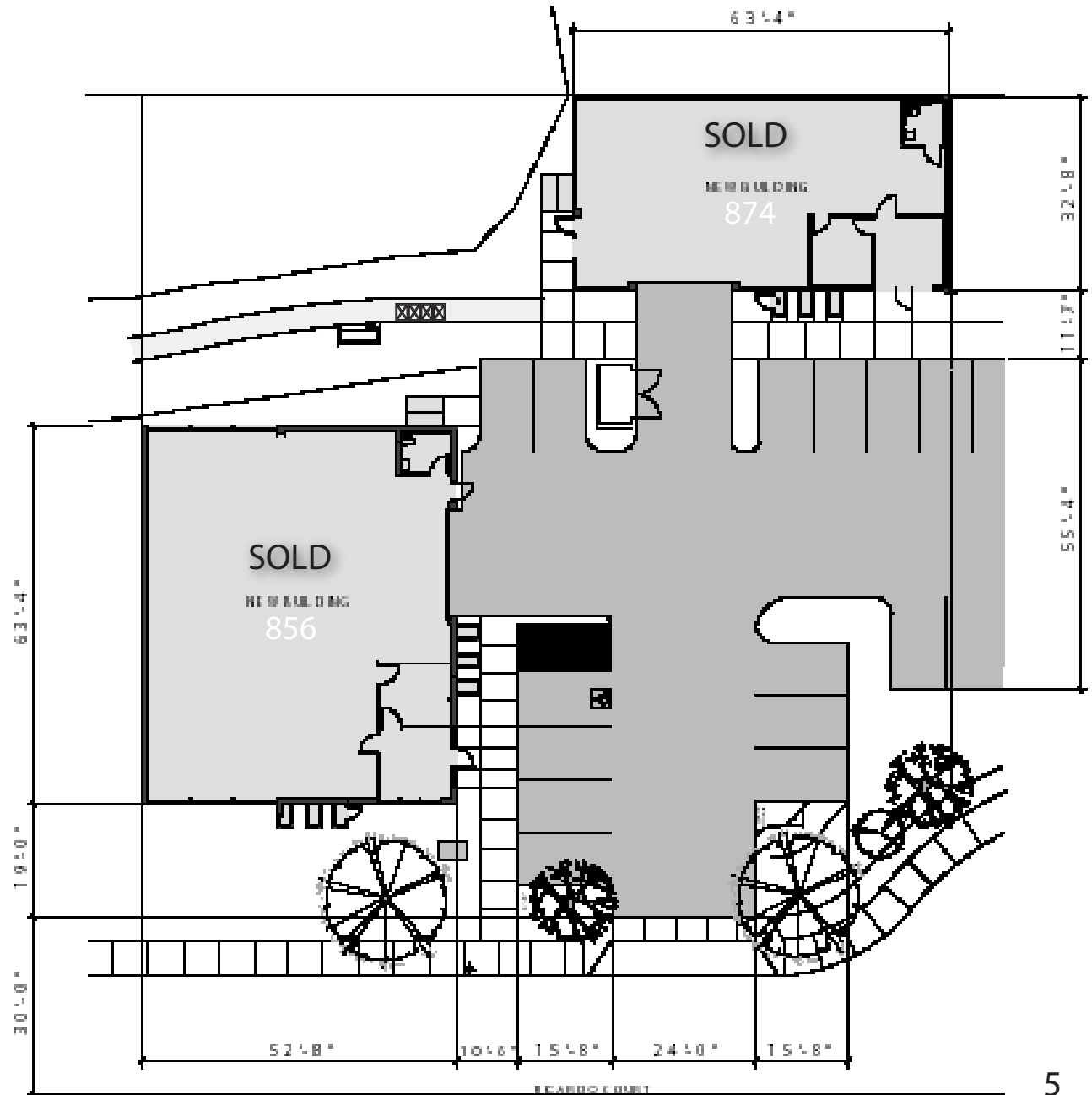


Quaglino Properties, LLC
815 Fiero Lane,
San Luis Obispo, CA 93401
Phone: 805.543.0560
Fax: 805.543.0214
Email: sue@quaglino.com
Website: www.quaglino.com

Ricardo Court Complex
856-874 Ricardo Court
San Luis Obispo, California

Site Information

Site Area: 21,823/sf
Building Area 856: 3,335/sf
Building Area 874: 2,095/sf
Ceiling Height: 18' feet +/-
Parking: 10 spaces

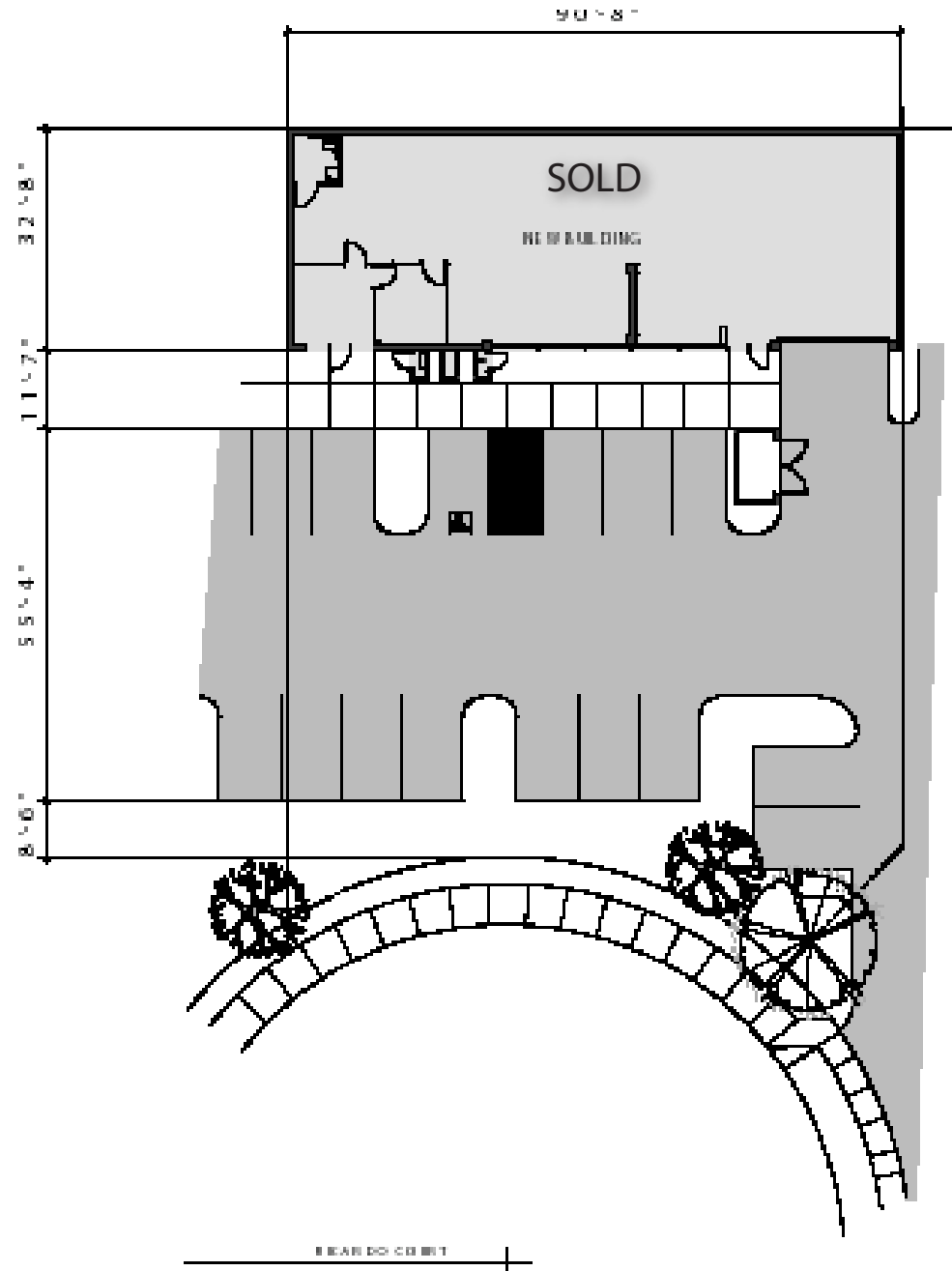


Quaglino Properties, LLC
815 Fiero Lane,
San Luis Obispo, CA 93401
Phone: 805.543.0560
Fax: 805.543.0214
Email: sue@quaglino.com
Website: www.quaglino.com

Ricardo Court Complex
882 Ricardo Court
San Luis Obispo, California

Site Information

Site Area: 10,282/sf
Building Area: 2,985/sf
Ceiling Height: 18' feet +/-
Parking: 6 spaces

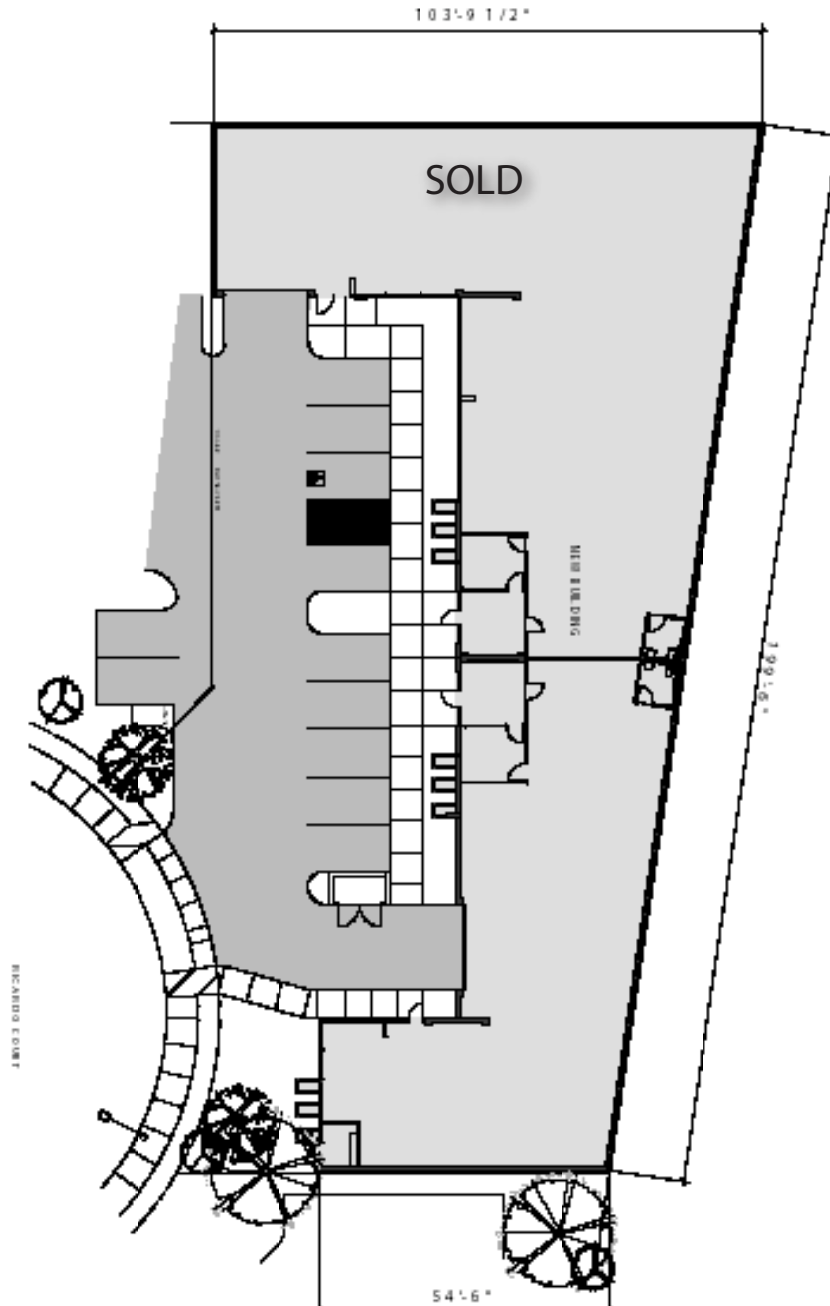


Quaglino Properties, LLC
815 Fiero Lane,
San Luis Obispo, CA 93401
Phone: 805.543.0560
Fax: 805.543.0214
Email: sue@quaglino.com
Website: www.quaglino.com

Ricardo Court Complex
888 Ricardo Court
San Luis Obispo, California

Site Information

Site Area: 18,129/sf
Building Area: 10,950/sf
Ceiling Height: 18' feet +/-
Parking: 20 spaces

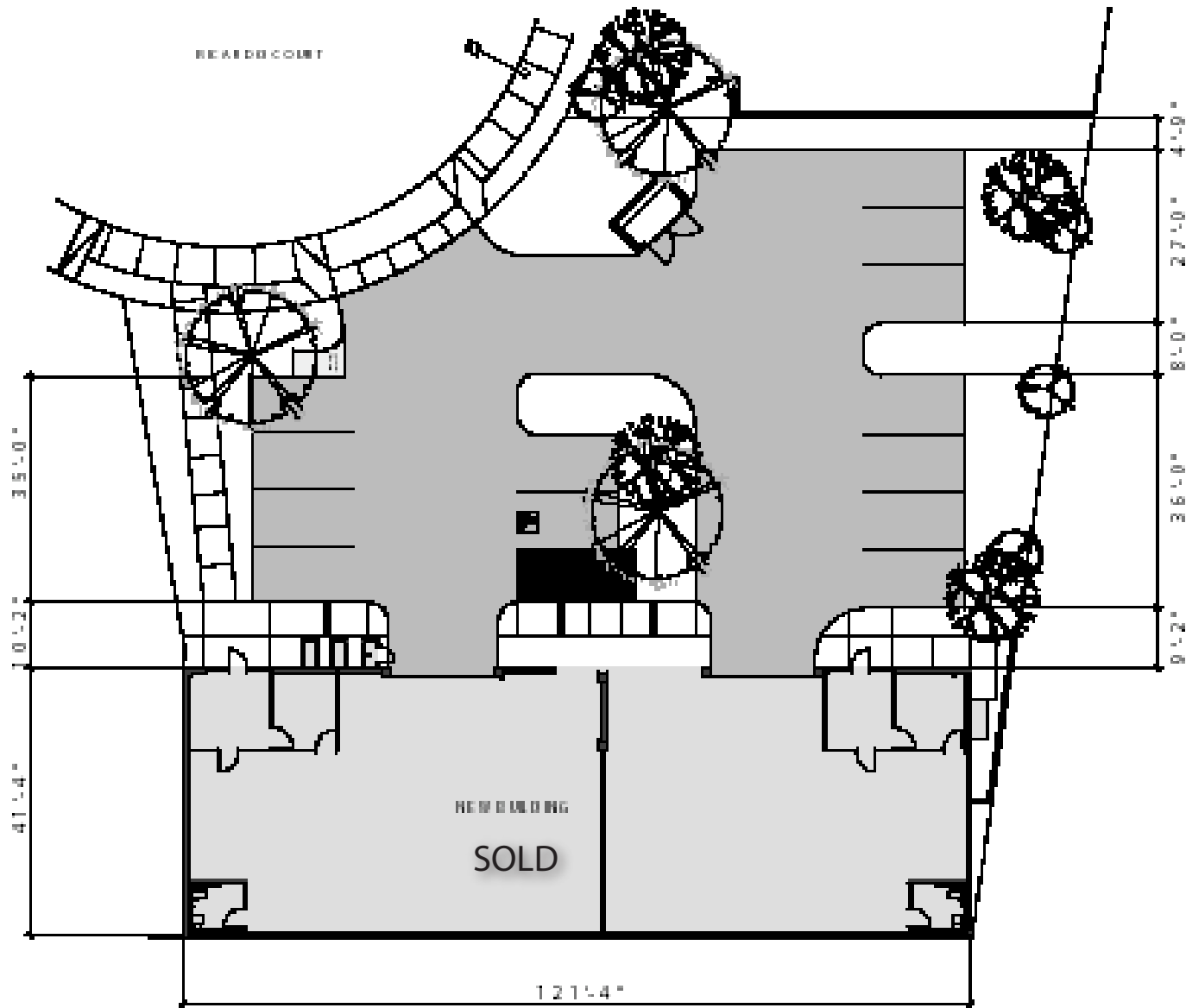


Quaglino Properties, LLC
815 Fiero Lane,
San Luis Obispo, CA 93401
Phone: 805.543.0560
Fax: 805.543.0214
Email: sue@quaglino.com
Website: www.quaglino.com

Ricardo Court Complex
887 Ricardo Court
San Luis Obispo, California

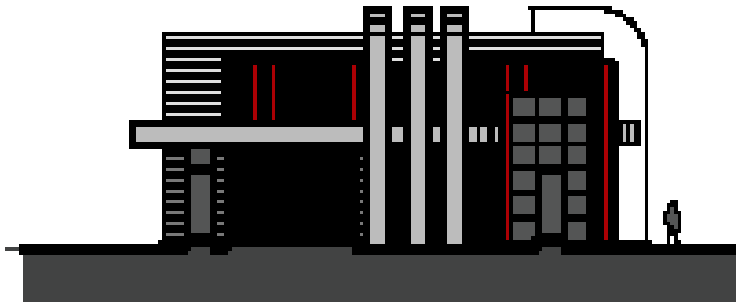
Site Information

Site Area: 15,530/sf
Building Area: 5,000/sf
Ceiling Height: 18' feet +/-
Parking: 13 spaces

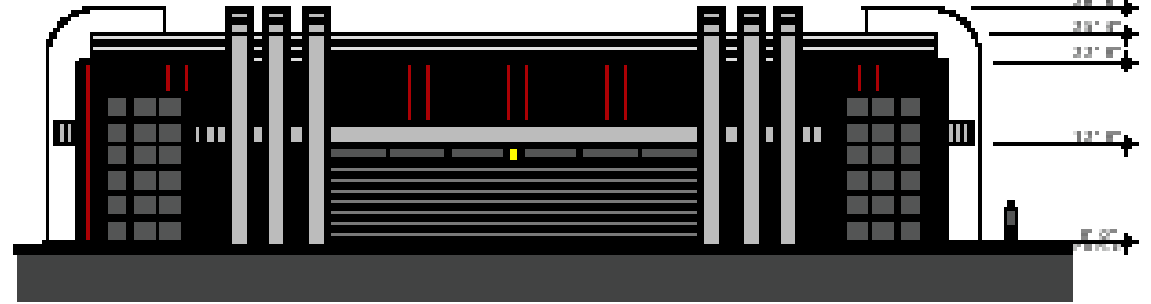


Quaglino Properties, LLC
815 Fiero Lane,
San Luis Obispo, CA 93401
Phone: 805.543.0560
Fax: 805.543.0214
Email: sue@quaglino.com
Website: www.quaglino.com

ELEVATIONS - 814 & 830 Ricardo Court

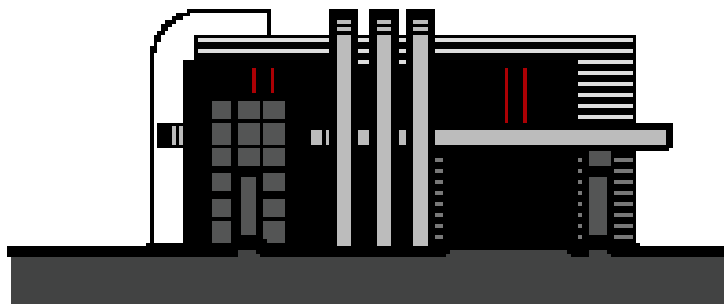


WEST SACRAMENTO SIDE



SOUTH - 814 RICARDO COURT

830 RICARDO COURT

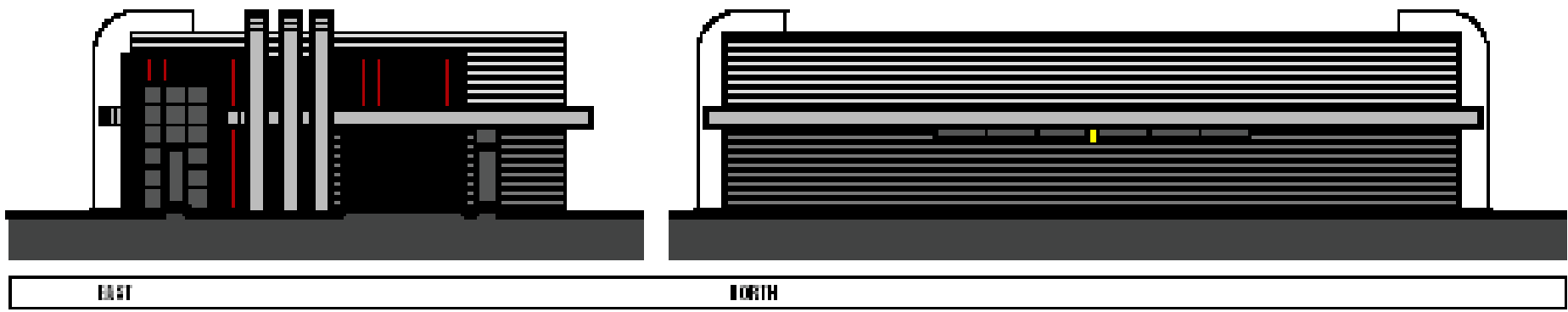
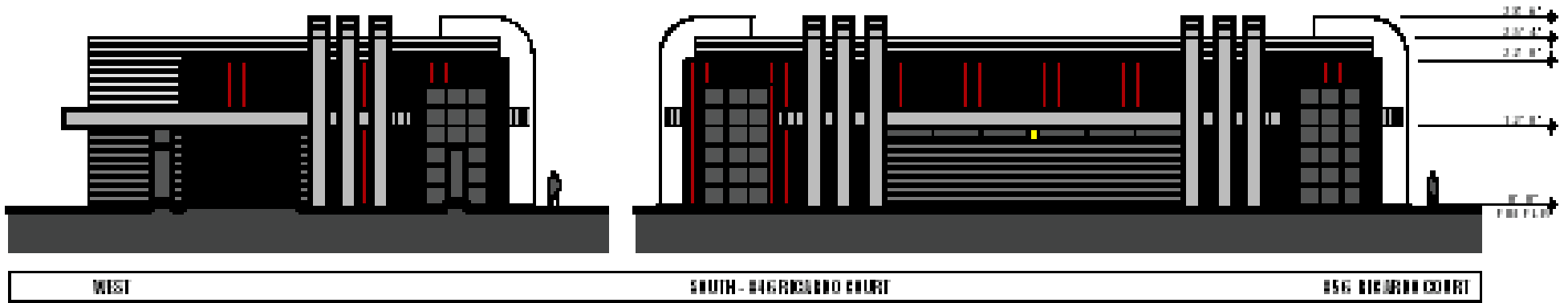


EAST

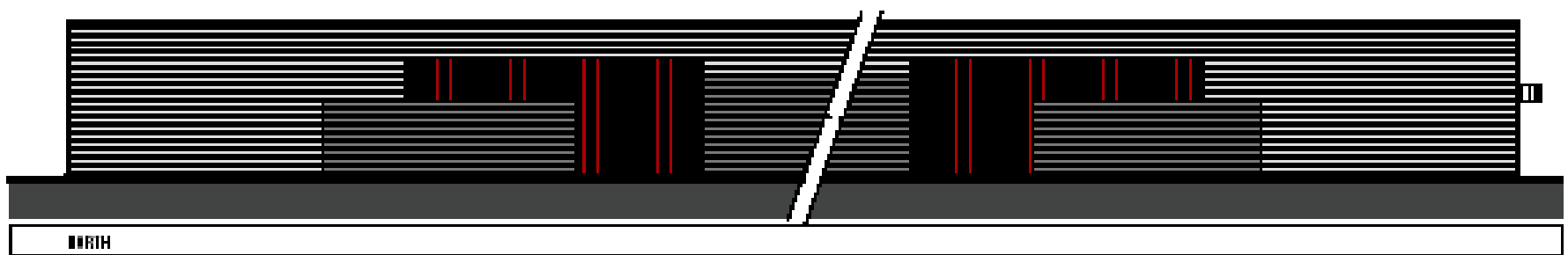
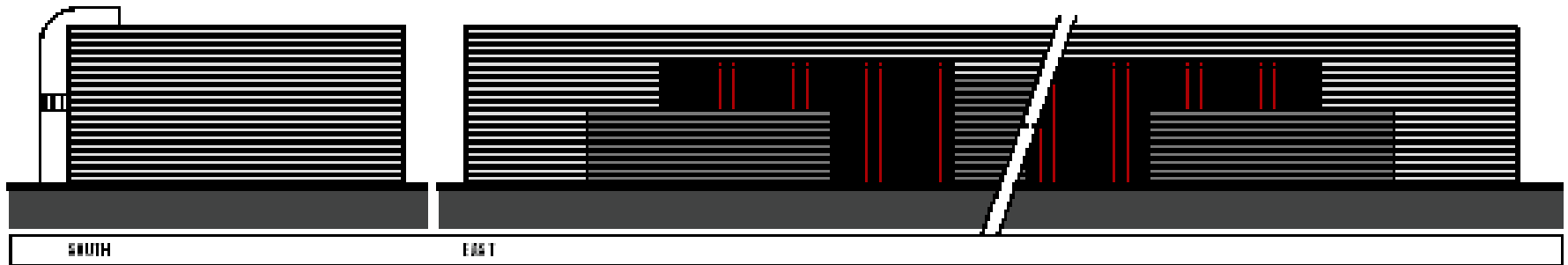
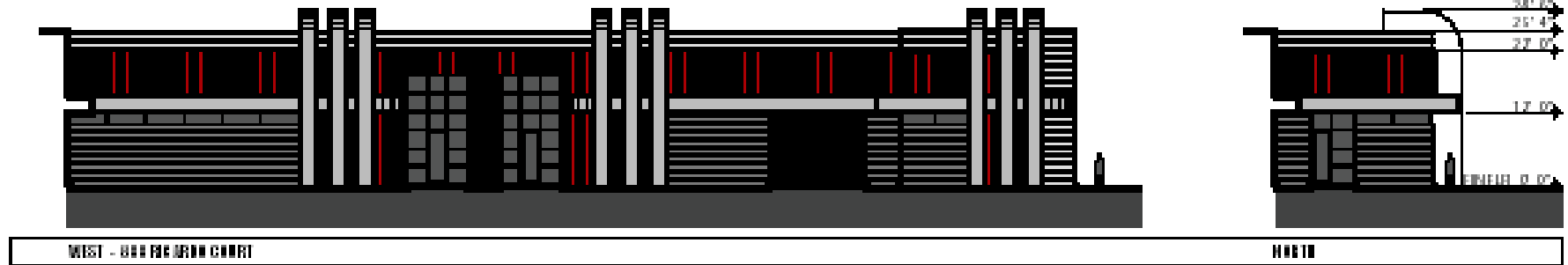
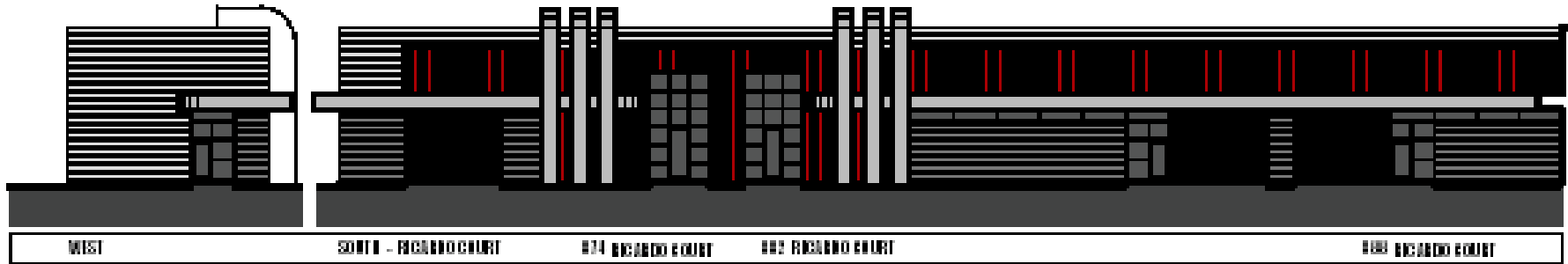


NORTH

ELEVATIONS - 846 & 856 Ricardo Court



ELEVATIONS - 874, 882 & 888 Ricardo Court



ELEVATIONS - 887 Ricardo Court

