

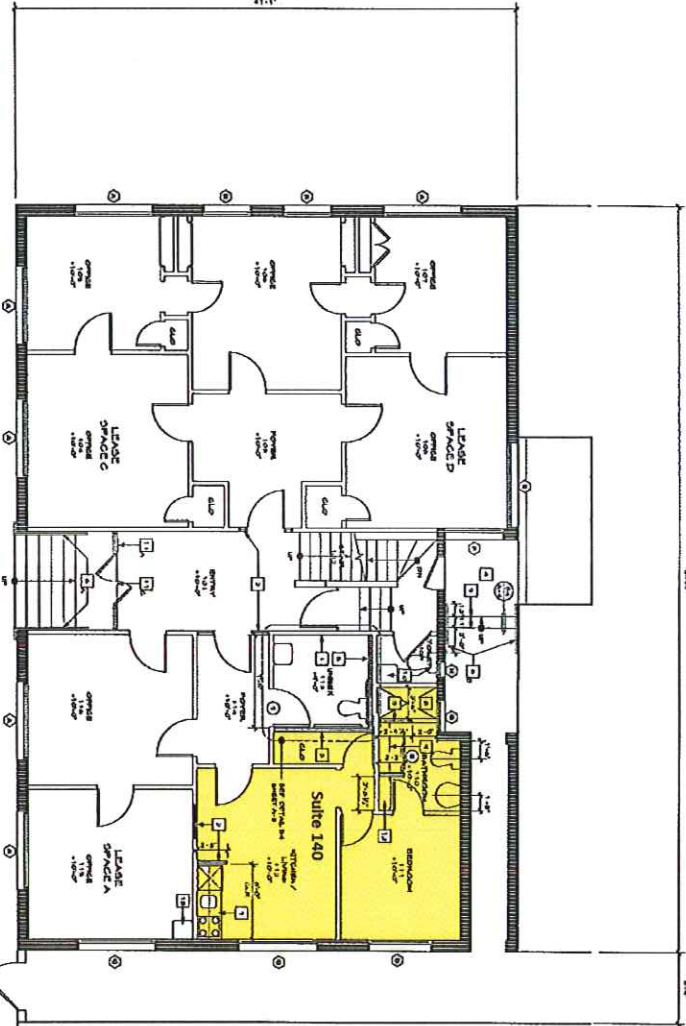
FLOOR PLAN GENERAL NOTES

1. All work shall be in accordance with the City of Los Angeles Building Department and the State of California Building Code.
2. All work shall be in accordance with the City of Los Angeles Building Department and the State of California Building Code.
3. All work shall be in accordance with the City of Los Angeles Building Department and the State of California Building Code.

FLOOR PLAN REFERENCE NOTES

1. See Section 10000 for details.
2. See Section 10000 for details.
3. See Section 10000 for details.
4. See Section 10000 for details.
5. See Section 10000 for details.
6. See Section 10000 for details.
7. See Section 10000 for details.
8. See Section 10000 for details.
9. See Section 10000 for details.
10. See Section 10000 for details.
11. See Section 10000 for details.
12. See Section 10000 for details.
13. See Section 10000 for details.
14. See Section 10000 for details.

FIRST FLOOR PLAN



LEGEND
 Solid line: Existing wall/door/curtain wall
 Dashed line: Existing window/door/curtain wall
 Dotted line: New 1/2" thick glass 1/2" thick

PULTS
 Steven D. Pults, AIA & Associates, LLP

PROPERTIES
 SINGER BUILDING

PROPERTIES
 SINGER BUILDING

PROPERTIES
 SINGER BUILDING



A-1