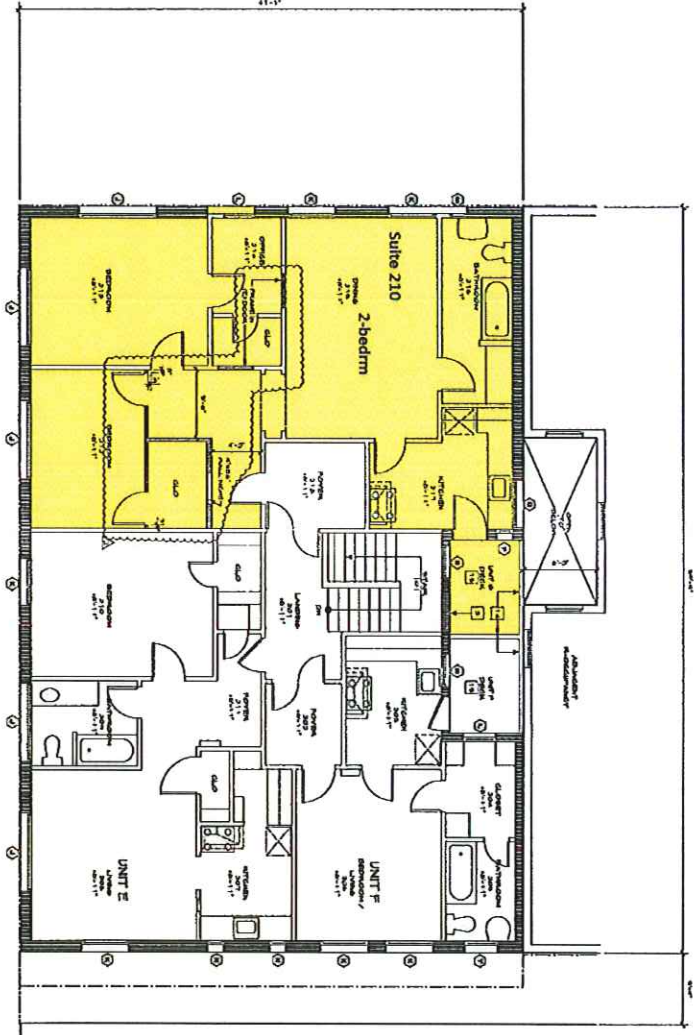


- FLOOR PLAN GENERAL NOTES**
1. All work shall be in accordance with the approved set of construction documents for this project.
  2. All work shall be in accordance with the approved set of construction documents for this project.
  3. All work shall be in accordance with the approved set of construction documents for this project.
  4. All work shall be in accordance with the approved set of construction documents for this project.
  5. All work shall be in accordance with the approved set of construction documents for this project.
  6. All work shall be in accordance with the approved set of construction documents for this project.
  7. All work shall be in accordance with the approved set of construction documents for this project.
  8. All work shall be in accordance with the approved set of construction documents for this project.
  9. All work shall be in accordance with the approved set of construction documents for this project.
  10. All work shall be in accordance with the approved set of construction documents for this project.
  11. All work shall be in accordance with the approved set of construction documents for this project.
  12. All work shall be in accordance with the approved set of construction documents for this project.
  13. All work shall be in accordance with the approved set of construction documents for this project.
  14. All work shall be in accordance with the approved set of construction documents for this project.
  15. All work shall be in accordance with the approved set of construction documents for this project.
  16. All work shall be in accordance with the approved set of construction documents for this project.
  17. All work shall be in accordance with the approved set of construction documents for this project.
  18. All work shall be in accordance with the approved set of construction documents for this project.
  19. All work shall be in accordance with the approved set of construction documents for this project.
  20. All work shall be in accordance with the approved set of construction documents for this project.

- FLOOR PLAN REFERENCE NOTES**
1. See Section 05100 - Carpentry for details of construction.
  2. See Section 05200 - Paint and Coatings for details of construction.
  3. See Section 05300 - Drywall for details of construction.
  4. See Section 05400 - Acoustical Treatment for details of construction.
  5. See Section 05500 - Glass and Glazing for details of construction.
  6. See Section 05600 - Stairs for details of construction.
  7. See Section 05700 - Elevators for details of construction.
  8. See Section 05800 - Mechanical for details of construction.
  9. See Section 05900 - Electrical for details of construction.
  10. See Section 06000 - Plumbing for details of construction.
  11. See Section 06100 - Fire Protection for details of construction.
  12. See Section 06200 - Security for details of construction.
  13. See Section 06300 - Telecommunications for details of construction.
  14. See Section 06400 - Other for details of construction.
  15. See Section 06500 - Other for details of construction.
  16. See Section 06600 - Other for details of construction.
  17. See Section 06700 - Other for details of construction.
  18. See Section 06800 - Other for details of construction.
  19. See Section 06900 - Other for details of construction.
  20. See Section 07000 - Other for details of construction.

**SECOND FLOOR PLAN**



**LEGEND**

--- existing construction

--- new construction

--- work to be removed

**PULTS**  
Steven D. Pults, AIA & Associates, LLP

**ARCHITECT**  
STEVEN D. PULTS, AIA & ASSOCIATES, LLP  
7700 WILLOW CREEK DRIVE  
SUITE 200  
DALLAS, TEXAS 75231  
PHONE: 214.343.1111  
FAX: 214.343.1112  
WWW.PULTS.COM

**GENERAL CONTRACTOR**  
SINGER BUILDING  
7700 WILLOW CREEK DRIVE  
SUITE 200  
DALLAS, TEXAS 75231  
PHONE: 214.343.1111  
FAX: 214.343.1112  
WWW.SINGERBUILDING.COM

**MECHANICAL CONTRACTOR**  
MCM CONTRACTORS  
10000 WILLOW CREEK DRIVE  
SUITE 200  
DALLAS, TEXAS 75231  
PHONE: 214.343.1111  
FAX: 214.343.1112  
WWW.MCMCONTRACTORS.COM

**ARCHITECT**  
STEVEN D. PULTS, AIA & ASSOCIATES, LLP  
7700 WILLOW CREEK DRIVE  
SUITE 200  
DALLAS, TEXAS 75231  
PHONE: 214.343.1111  
FAX: 214.343.1112  
WWW.PULTS.COM

**DATE**  
1/14/11

**PROJECT**  
SINGER BUILDING

**SCALE**  
AS SHOWN

**NO.**  
A-2